

# 2,500 SQUARE FEET

A REMODELED BACHELOR PAD IN VAIL PROVES YOU DON'T NEED A MANSION TO HAVE THE MOUNTAIN GETAWAY OF YOUR DREAMS



This condo's handsome dining room—defined by leather and wood—gets a touch of softness from plaid fabric by Lee Jofa. **FACING PAGE:** For the living room, interior designer Cindy Bardes Galvin selected rough-sawn reclaimed snow fencing for the fireplace wall and Wallace Creek marble for the fireplace itself. The chenille sofa and wingback chairs, covered in Lee Jofa's Mille Fleur fabric, are soft counterparts to the wrought-iron coffee table.



The kitchen is a study in textures: One-by-eight-inch ceramic tiles from Artistic Tile offer a bit of shine, while bar stools from Palecek and light fixtures from Gabby add understated style. The kitchen cabinets underwent a five-step gray-wash process to get the color just right. FACING PAGE, LEFT: Galvin topped the cabinets with mother-of-pearl quartzite countertops, then added stainless-steel appliances and a custom hood. FACING PAGE, RIGHT: Galvin chose the bold Cordoba wallcovering from Manuel Canovas and gray slate floors for the entry and hallway. Using the same materials in both spaces keeps them from feeling chopped up or small.

The design orders for this remodeled condo in Vail Village's Rams-Horn Lodge were straightforward: "Make the most of every square inch, just like in a ship," the client said.

Easier said than done. But architect Kyle Webb and interior designer Cindy Bardes Galvin couldn't pass up what was a once-in-a-blue-moon opportunity: The Rams-Horn Lodge owners' association had agreed to overhaul the old, nondescript building, giving the condo owner a chance to create a space with everything he wanted—and nothing he didn't. "We used every square inch," Webb says. "We worked out every little nuance of every detail."

In less than 2,500 finished square feet, the pair packed in four bedrooms, four-and-a-half bathrooms, a comfortable dining room, a gorgeous kitchen, and family and living rooms with plenty of space to lounge.

How? The living spaces form essentially one expansive room that makes the most of the condo's unobstructed views of Vail Mountain to the south and the Gore Range to the east. The bedrooms are cozy and comfortable, but not enormous.

With the footprint designed, Galvin visited the owner's California home to get a sense of how he lives. "He told me, 'I love wood,'" she says. But instead of creating a brown, lodge-style getaway, Galvin opted for a fresher interpretation. She selected heathered gray, rough-sawn reclaimed snow fencing from Wyoming for the fireplace wall in the living room and the bar area in the kitchen. Next she added doors, casing, trim and crown molding in a custom smoked-gray finish. These muted hues set the stage for the rest of the condo. >>

ARCHITECTURE BY **K.H. WEBB ARCHITECTS** INTERIOR DESIGN BY **BARDES INTERIORS**



BELOW, LEFT: "It's one of my signature moves," Galvin says of the coffered ceilings with pops of color on the recessed drywall—an easy way to add architectural interest and color to any space. (Galvin added coffered ceilings in all four bedrooms and the living and dining areas.) BELOW, RIGHT: Clean-lined and handsome, the master bath shows off a Balneo tub from BainUltra. The floors look like wood, but they're actually black-and-brown porcelain tiles, a water-friendly alternative. FACING PAGE: Patterns blend beautifully in this guest room. Galvin chose the Marcel striped wallcovering from Stark, Windowpane Wool fabric from Lee Jofa for the custom headboard and Holly Hunt's Estrella Christal fabric for the window treatments.



To pull off the relatively monochromatic color scheme, Galvin selected a wide range of materials that add depth and texture. She covered the living and dining room walls in a buttery yellow vinyl wallpaper by Thibaut with a python-skin texture. She chose black marble for the fireplace and added nickel carpet tacks to the wood surround for a bit of shine. In the kitchen, she opted against boring painted drywall and instead covered the walls in one-by-eight-inch shiny porcelain tiles. Metal-and-linen chandeliers from Gabby light the space. And in each bedroom, Galvin added a coffered ceiling and "popped an accent color" into the recessed squares. "It's easy to forget the ceilings, but this trick is a good way to add architectural interest," she says.

Next, Galvin layered on rugs, furnishings and fixtures that look and feel both sophisticated and casual.

The living room hosts a chenille gray-and-yellow sofa, two squared-off wingback chairs in a gray-and-yellow stag print, a leather trunk-inspired side table, and a two-toned wood coffee table with an iron base. The family room seats 15 on a handsome sectional sofa covered in highly durable ultrasuede; two additional "airplane" chairs in leather with riveted aluminum backs and bases are both playful and masculine. The bedrooms embody softness, courtesy of upholstered headboards, textured blankets and coverlets, and patterned window treatments.

"People tend to think that bigger is always better, and that you can only get 'real design' in a large space," Galvin says. "That's just not true. This condo feels big enough but also intimate. It's a home that's beautiful and functions just as it should." ○



"WE OFTEN SPEND MORE TIME CREATING A FLOOR PLAN FOR A CONDO THAN WE DO FOR A HOUSE. IT CAN BE COMPLICATED, BUT IT'S WORTH THE EFFORT TO GET IT RIGHT EVERY TIME."

KYLE WEBB

“DON'T BE AFRAID TO USE MATERIALS IN UNEXPECTED WAYS. UPHOLSTERY DOESN'T JUST BELONG ON A CHAIR, AND WOOD DOESN'T JUST BELONG ON THE FLOOR.”

CINDY BARDES GALVIN



RIGHT: Galvin upholstered the walls in the master bedroom to add a layer of luxury. “It lends such a coziness to the room,” she says of the Ralph Lauren Home Traquaire Paisley fabric. The headboard is upholstered with Fabricut’s “Koala” leather. BOTTOM: Galvin added a bit of pattern to these window treatments with Groundworks’ Honeycomb trim. FACING PAGE: Airplane chairs are a clever—and comfortable—design trick: The leather echoes the dining room chairs, and the aluminum bases reflect the stainless steel in the kitchen. “It’s all subtly woven together,” Galvin says. “Repeating materials in separate spaces helps create a cohesive design.”

## Mix It Up

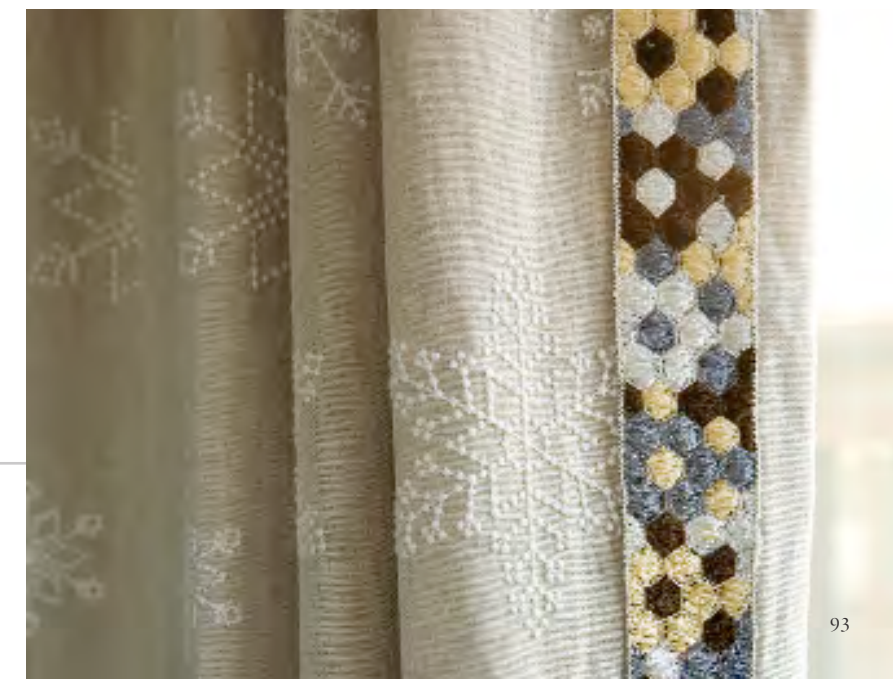
Designer Cindy Bardes Galvin is a master at mixing patterns to create the casual sophistication so many mountain-home owners want. So how does she do it?


**INDULGE IN SAMPLES** “I pull at least 50 fabrics for each job,” Galvin says. As she decides on fixed finishes—like the snow fencing surrounding the living room’s fireplace—she edits down her stack to the fabrics that work best with the finishes.

**STICK WITH A COLOR PALETTE** “You can do almost anything if you have a defined palette,” the designer says. In the master bedroom (right), Galvin upholstered the walls with a rich paisley fabric and then repeated the earthy colors in stripes, checks, solids and paisleys throughout the space to complete the look.

**DON'T CONFUSE PATTERN AND TEXTURE** In the living room, the gray chenille sofa has the faintest hint of yellow thread. “To me, that’s not a pattern. It’s texture,” Galvin says. Small spaces that might be overwhelmed by bold patterns can handle—and will benefit from—a wide range of textures and materials.

**MATCH YOUR FABRIC TO YOUR LIFESTYLE** Not all fabrics wear well, so pay attention to where you’ll use that fabulous linen-and-silk herringbone. “Pick mohair, cut velvet or chenille for anything that gets heavy-duty use,” Galvin suggests. Use linen or silk for pieces that get less use or for accents, such as pillows, that you can replace more easily.



more  Visit [mountainliving.com/2500squarefeet](http://mountainliving.com/2500squarefeet) for a guide to this home’s products and pros.